

MyCARE

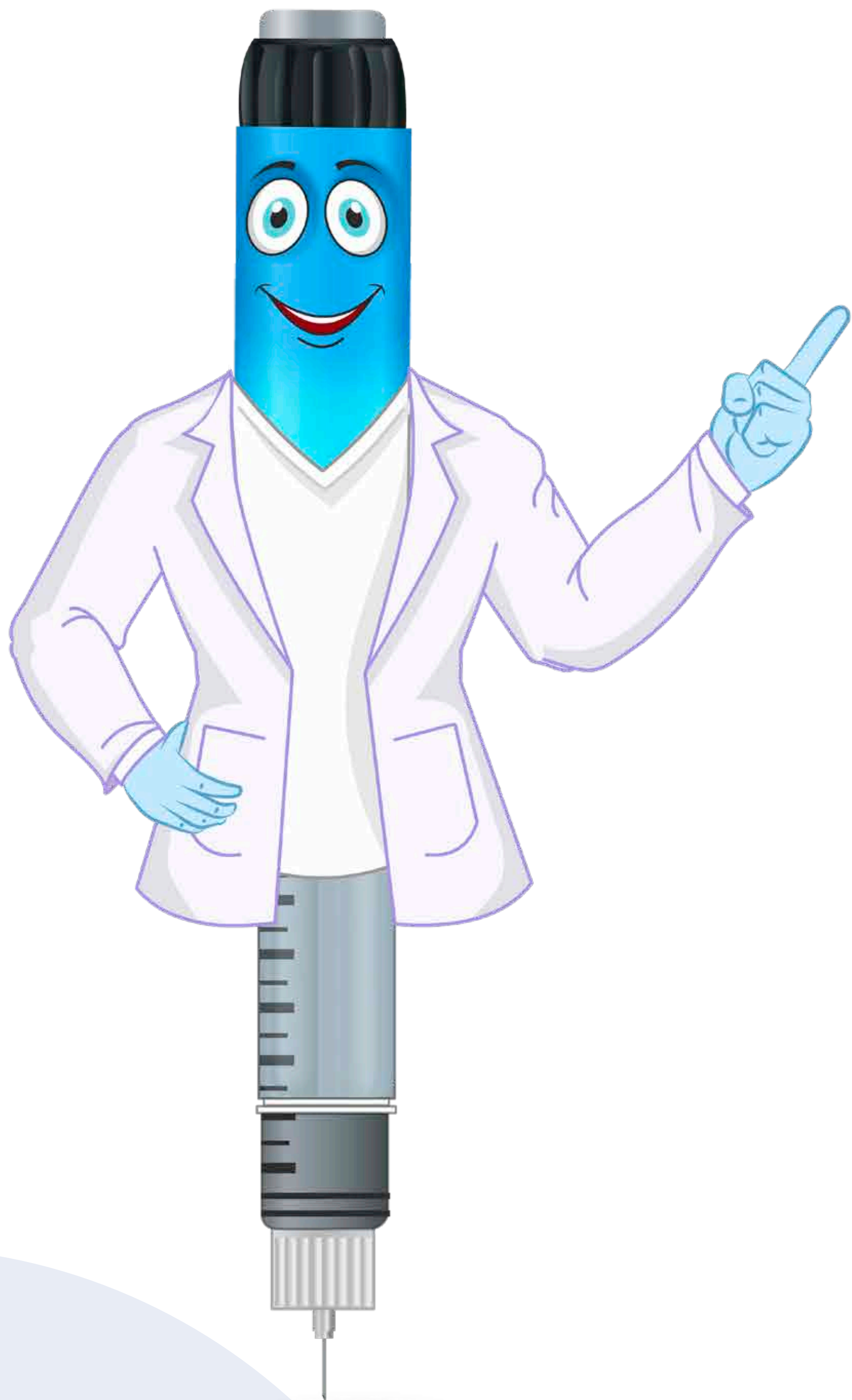
With me, every step of the way



“ It is important to learn
your **SIGNS & SYMPTOMS**
OF HYPOGLYCEMIA ”

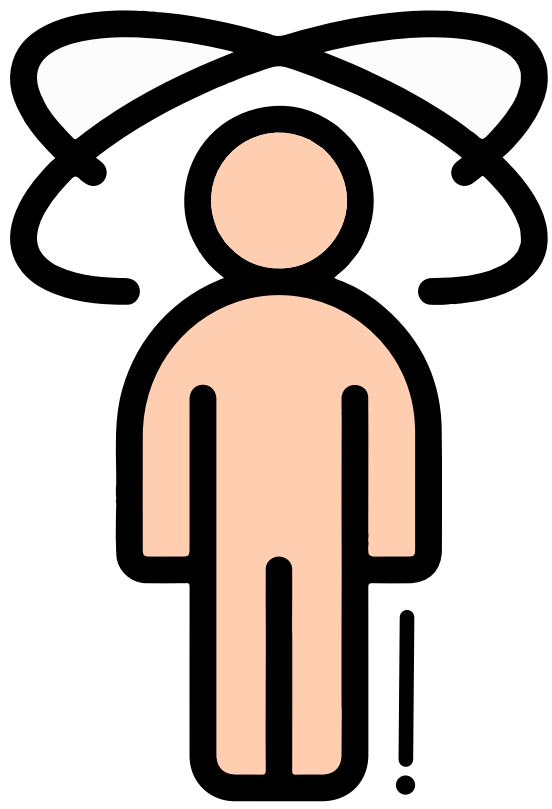


As **EACH PERSON'S
REACTION** to Hypoglycemia is
DIFFERENT

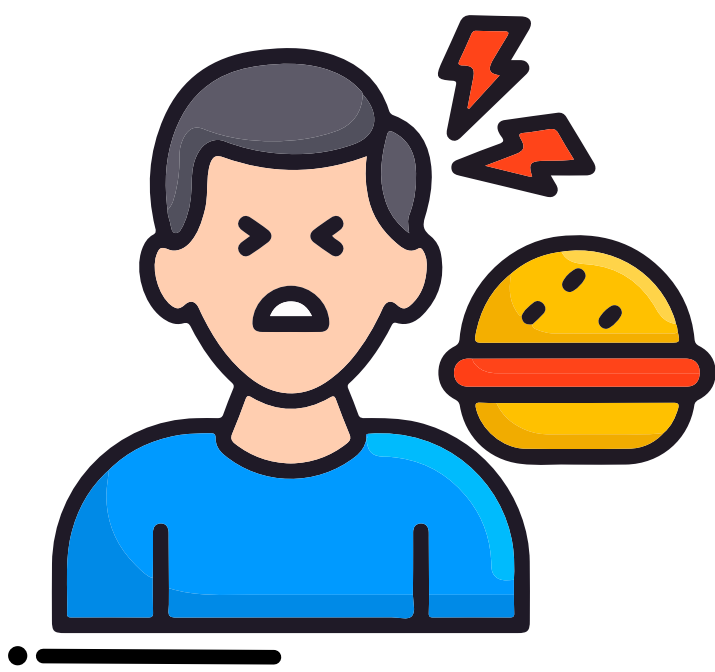




**MILD TO
MODERATE
SYMPTOMS**



SHAKY or **JITTERY**



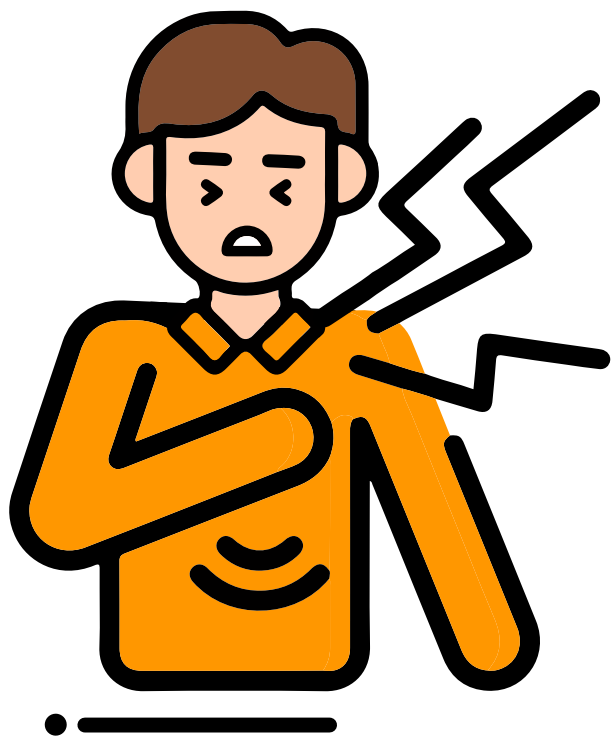
HUNGRY



TIRED



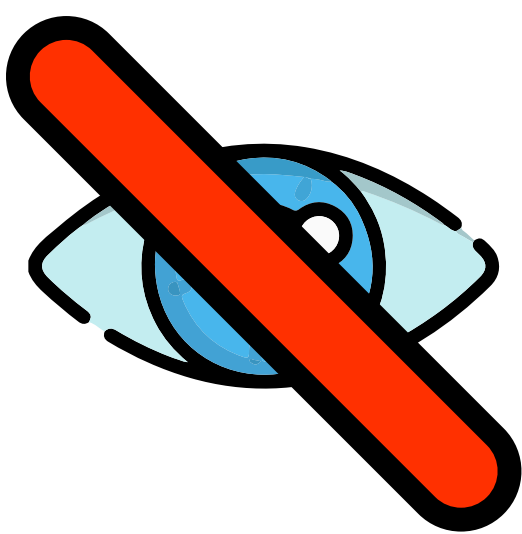
DIZZY,
LIGHTHEADED,
CONFUSED, or
IRRITABLE



**HEART BEATING
TOO FAST** or not
steadily



HEADACHE

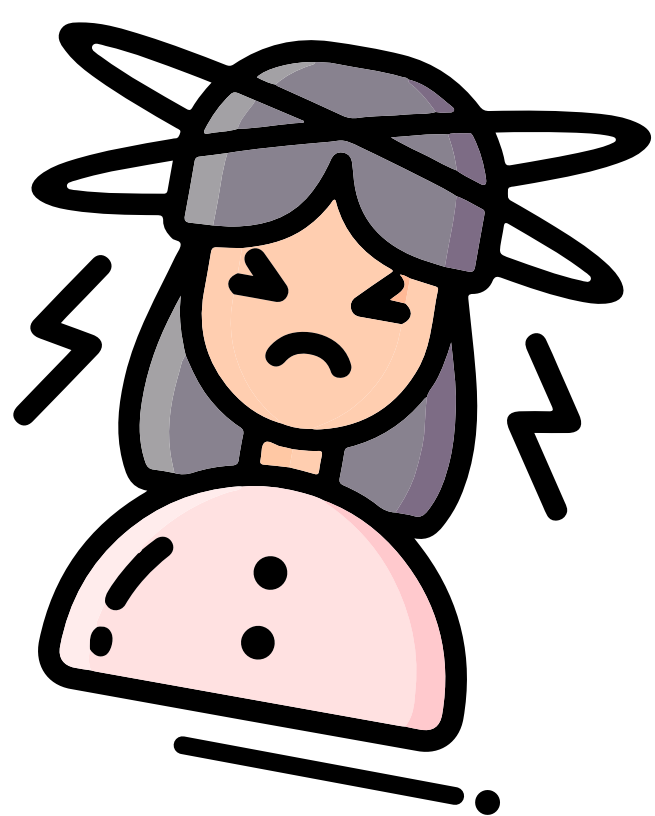


**CAN'T SEE OR
SPEAK** clearly

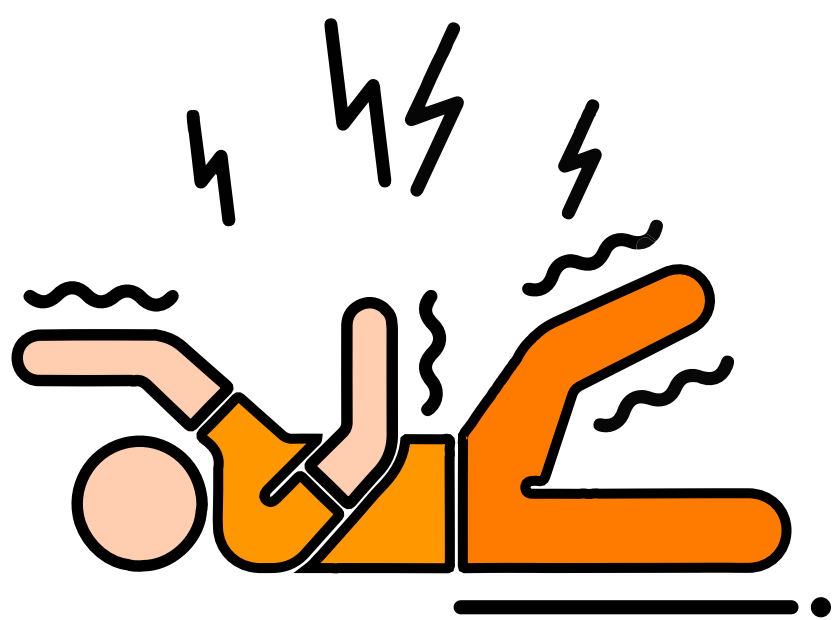




**SEVERE
SYMPTOMS**



LOSING
CONSCIOUSNESS



Having a **SEIZURE**

**SEVERE HYPOGLYCEMIA IS
LIFE-THREATENING** and
needs to be treated
immediately



“ For more information,
contact your doctor or your
MyCARE Diabetes Educator ”



MyCARE

With me, every step of the way

Reference

- National Institute of Diabetes, Digestive and Kidney Diseases. Low Blood Glucose (Hypoglycemia) | NIDDK. Available at <https://www.niddk.nih.gov/health-information/diabetes/overview/preventing-problems/low-blood-glucose-hypoglycemia>. Accessed 1st Dec 2021

Issued in Public Interest by



The guide/presentation/content/literature is for general information, guidance and educational purposes only and is not complete or exhaustive. The guide /presentation/content/literature is not intended or implied to replace or substitute any current practice and or advice/guidance/diet provided by healthcare professionals. This guide/presentation/content/literature does not constitute any treatment/therapy/medication/diet/opinions for any patients who are on diabetes medication, the patients are required to prior consult their healthcare professional before acting on any change on treatment/therapy/ medication/diet and/or opinions. USV Private Limited makes no representations as to accuracy, completeness, correctness, suitability or validity of any information contained in this guide/presentation/content/ literature and will not be liable for any losses, injuries or damages arising from its use.

